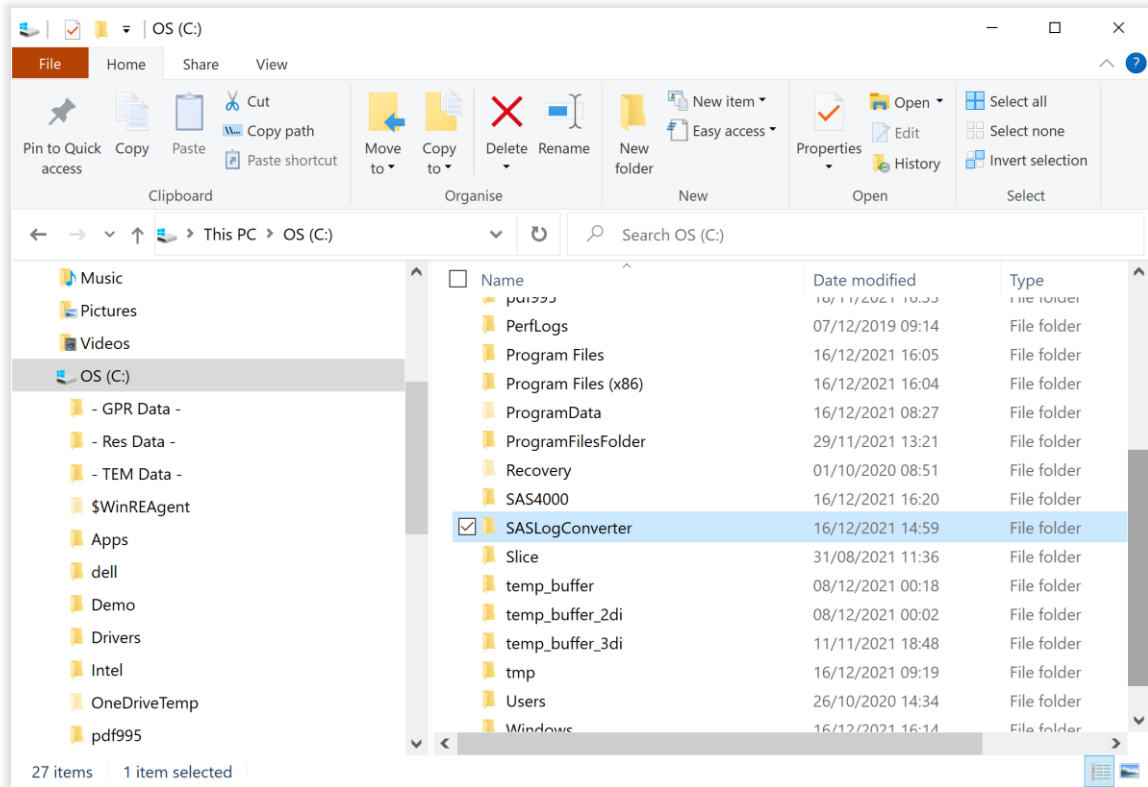


GUIDELINEGEO | ABEM | MALA

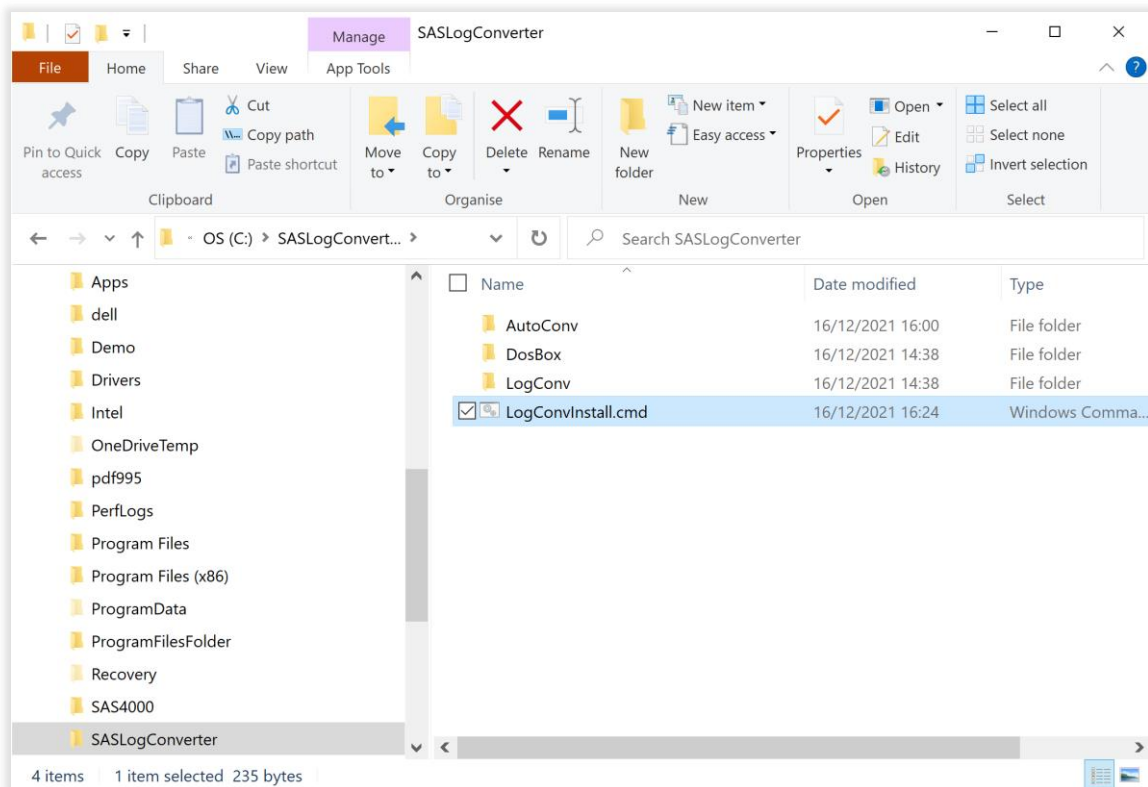
SAS Log Conversion Software: Installation procedure

NOTE: Before starting, ensure that **SAS Utilities** software is already installed on your PC, using the default installation parameters. The utilities software can be downloaded from the **Guideline Geo** website:
<https://www.guidelinegeo.com/support-service-advice-training/resource-center>

1. Extract the contents of **SASLogConverter.zip** and copy the **SASLogConverter** folder to the root of **C:** on your PC.



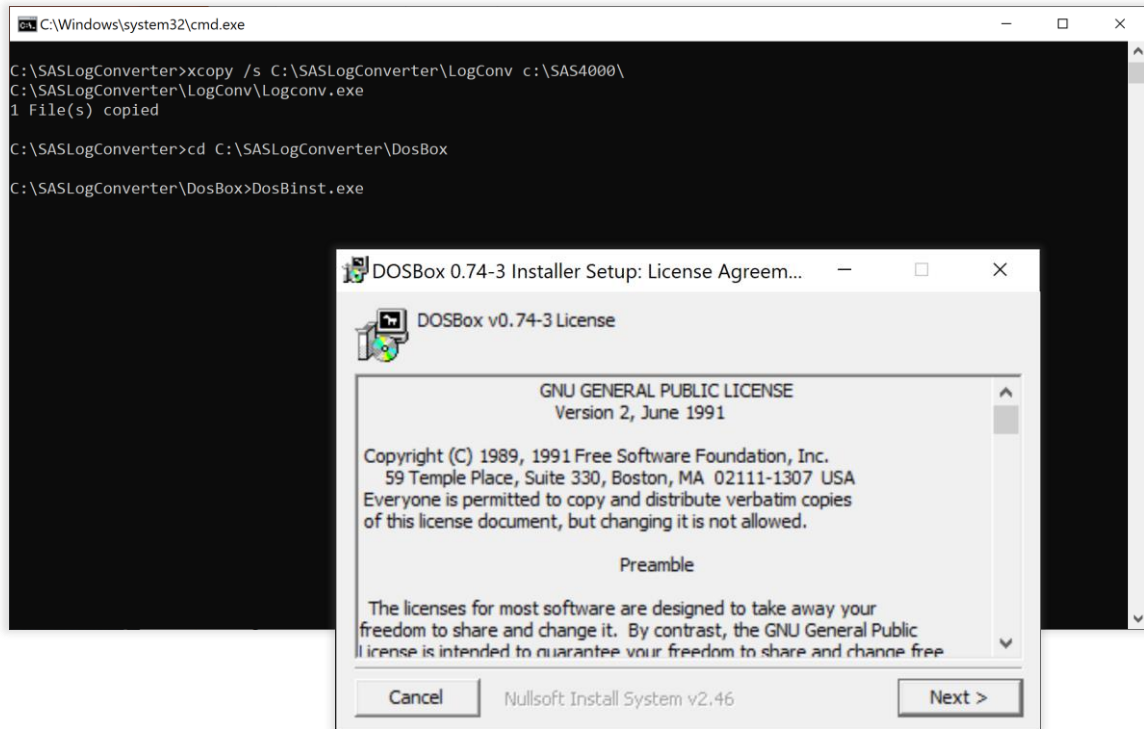
2. Run the file **LogConvInstall** by double-clicking on it.



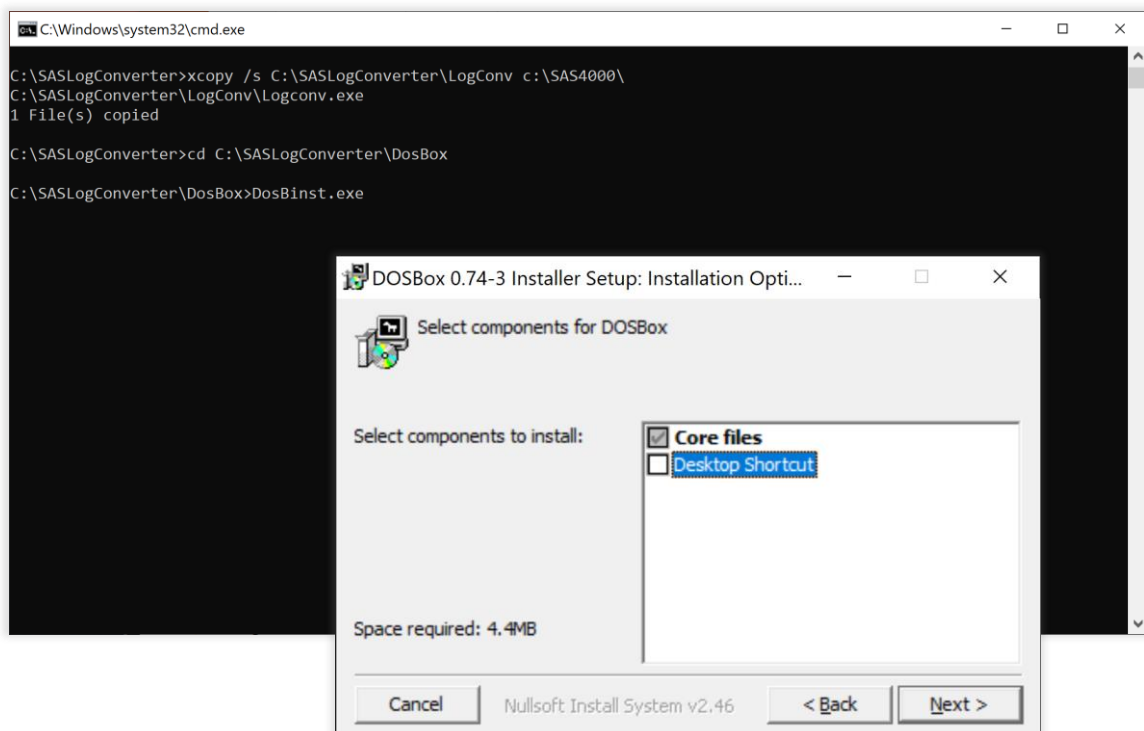
GUIDELINEGEO | ABEM | MALA

SAS Log Conversion Software: Installation procedure

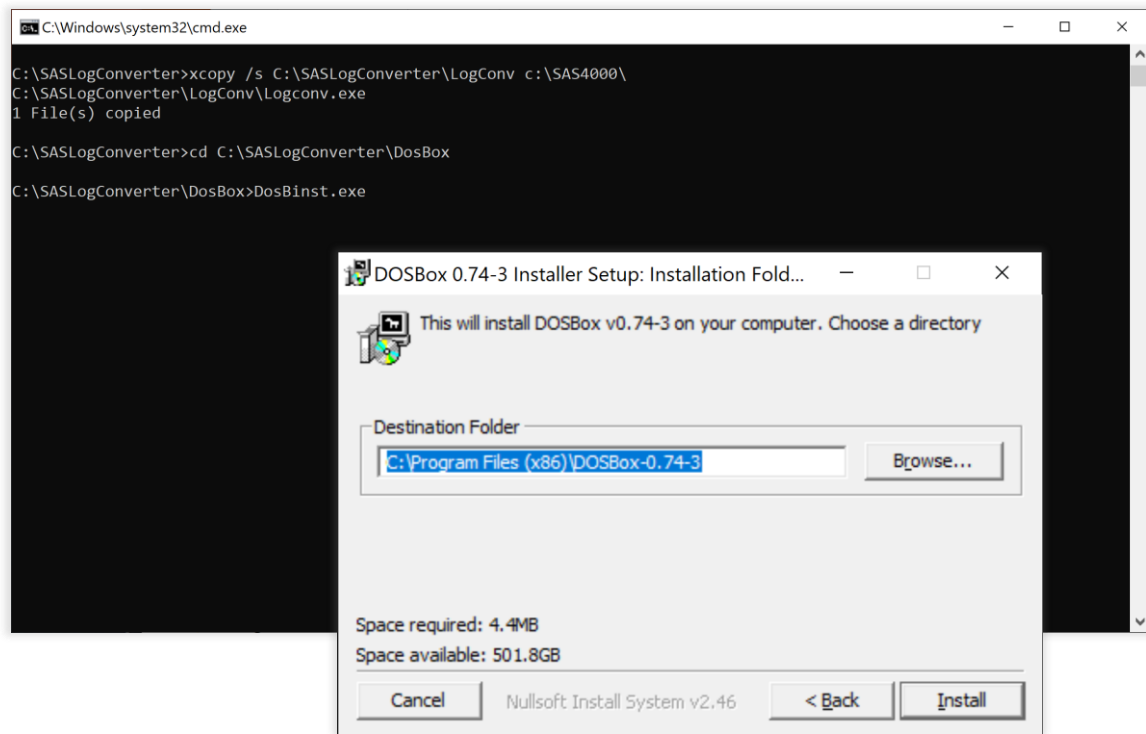
3. The script will install a file called **Logconv.exe** into the **SAS Utilities** root folder, if this is the first time you have done this procedure, there will be no notification and the script will begin installation of software called **DosBox**. If you have done this installation before, the script will stop to ask if you want to overwrite **Logconv.exe**; confirm by pressing “Y”. When the **DosBox** installation initializes, choose **Next** to accept the licensing agreement.



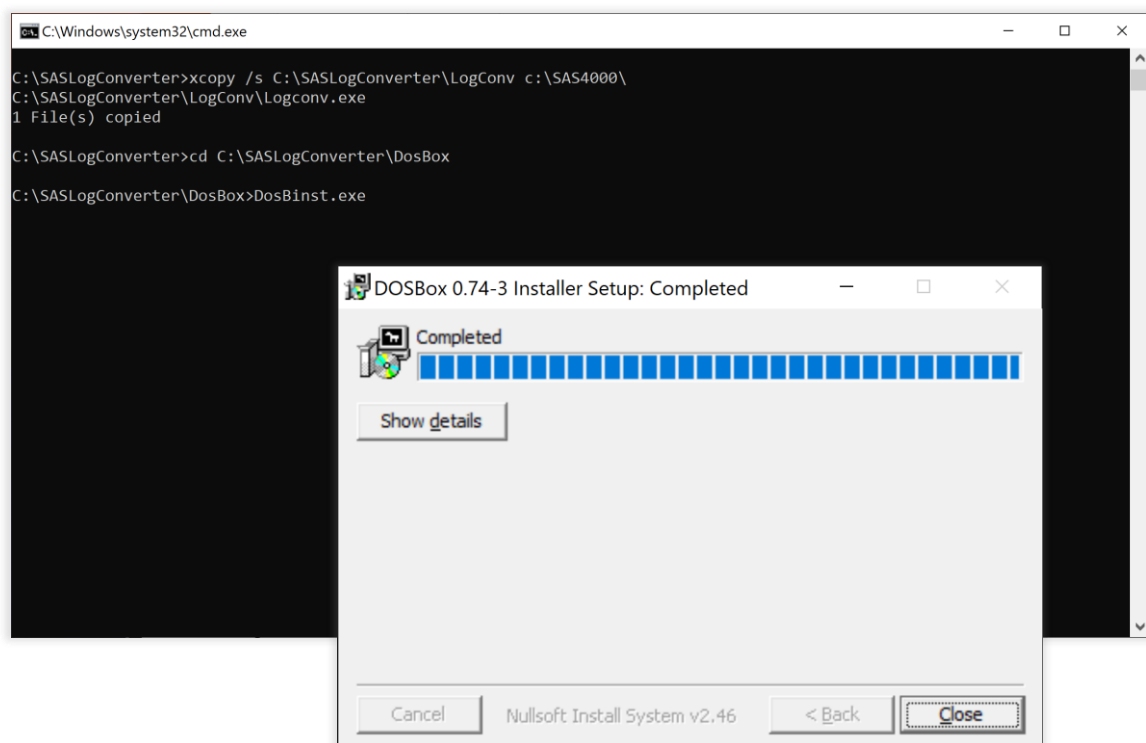
4. **Deselect** the option for **Desktop Shortcut**, it will not be needed.



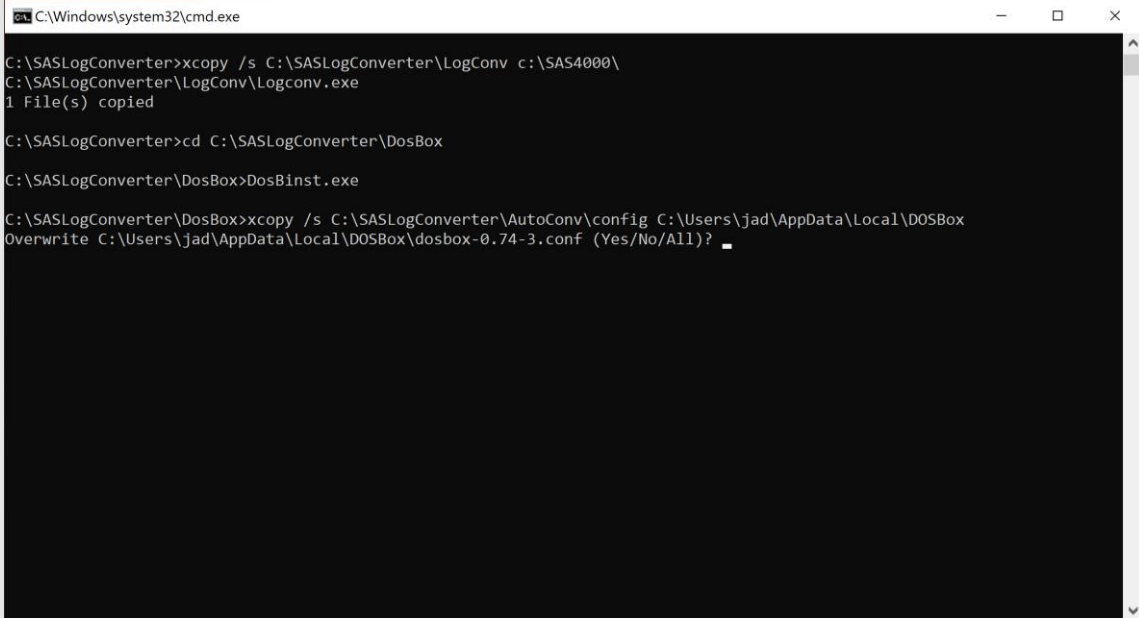
5. **Accept** default installation location for **DosBox**.



6. Once the installation has completed press **Close** and script will continue with next steps.

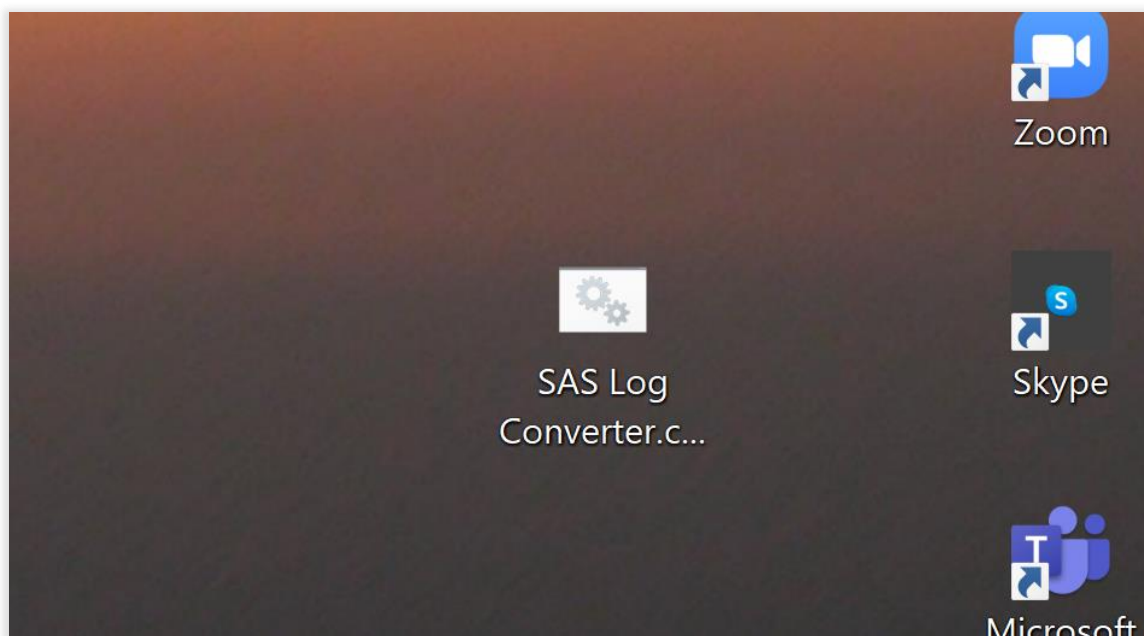


7. **Confirm** overwrite of a configuration file for **DosBox** by pressing “Y”.



```
C:\Windows\system32\cmd.exe
C:\SASLogConverter>xcopy /s C:\SASLogConverter\LogConv c:\SAS4000\
C:\SASLogConverter\LogConv\Logconv.exe
1 File(s) copied
C:\SASLogConverter>cd C:\SASLogConverter\DosBox
C:\SASLogConverter\DosBox>DosBinst.exe
C:\SASLogConverter\DosBox>xcopy /s C:\SASLogConverter\AutoConv\config C:\Users\jad\AppData\Local\DOSBox
Overwrite C:\Users\jad\AppData\Local\DOSBox\dosbox-0.74-3.conf (Yes/No/All)?
```

8. After the final step, the script box will **close automatically**. If this is **not** the first time you have run the installation, there will be a final overwrite warning before it closes: once again press “Y” to accept. The script will now have made a new icon on your desktop ready for converting **SAS Log** data.

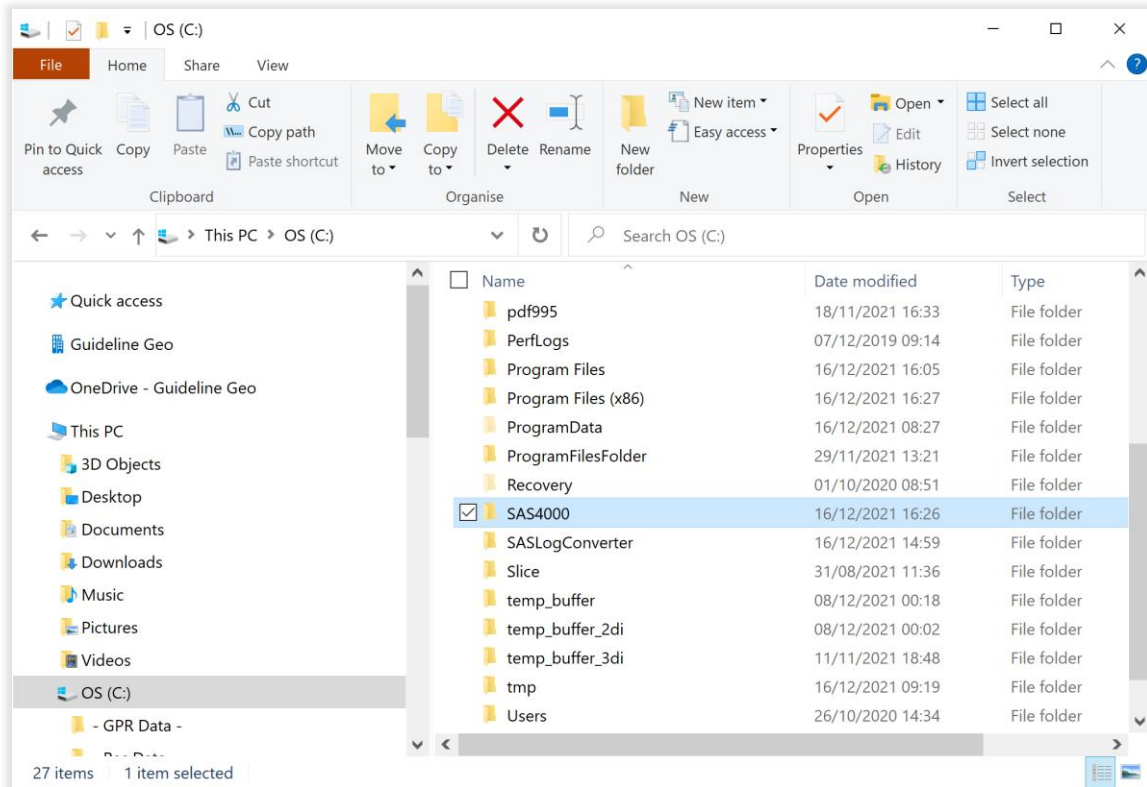


GUIDELINEGEO | ABEM | MALA

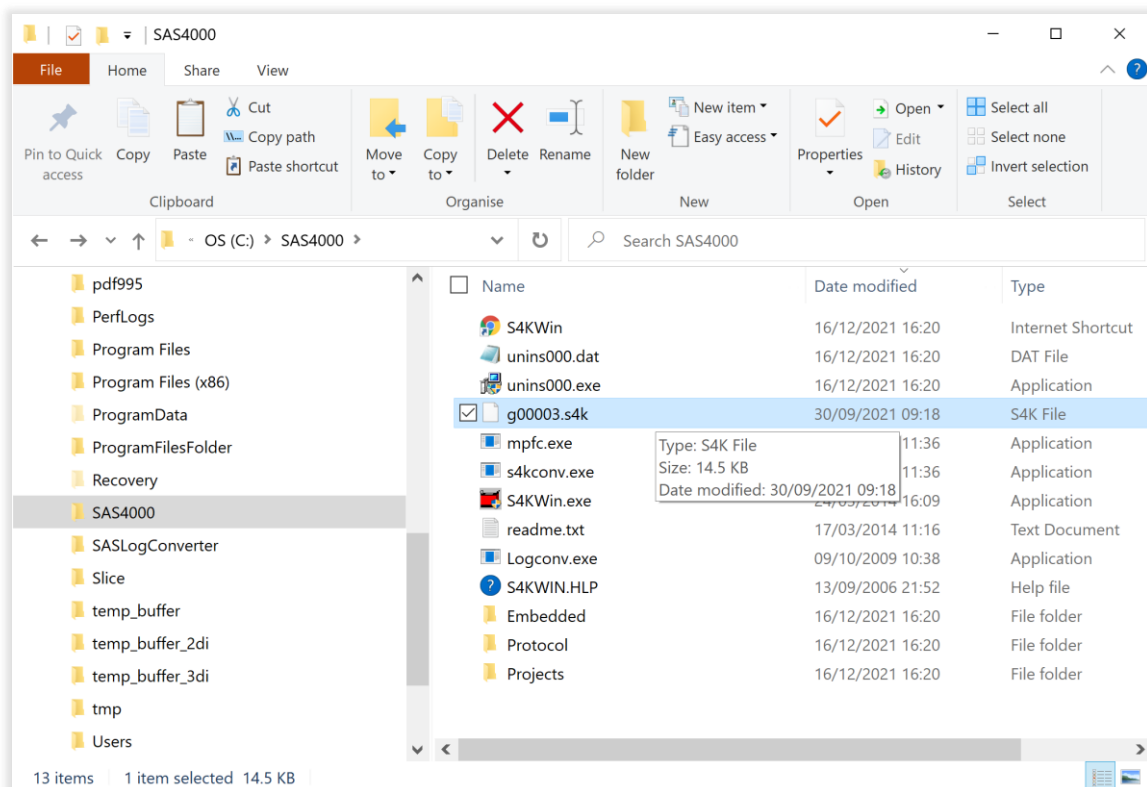
SAS Log Conversion Software: Installation procedure

The conversion tool will automatically convert SAS Log data to the industry standard LAS format. This is a text-based format which allows import to many common processing and visualization software packages but also allows easy import to simple graphing software such as Microsoft Excel.

A. Navigate to the installation folder for **SAS Utilities** (C:\SAS4000).



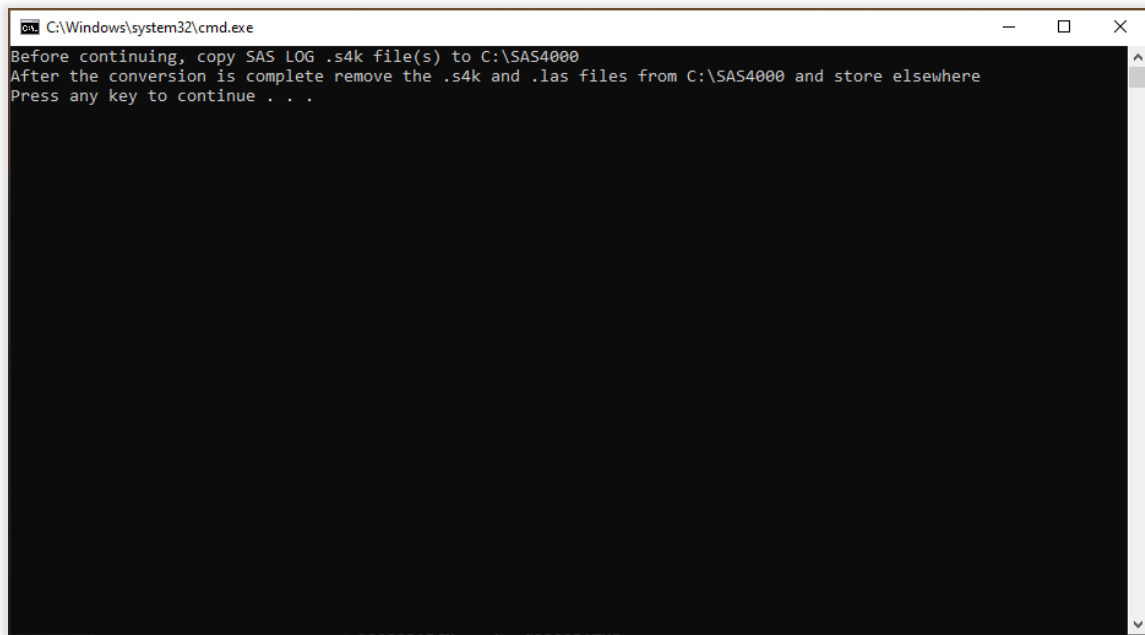
B. Copy any **SAS Log files** downloaded from the instrument into C:\SAS4000. These files have the format g*****.s4k



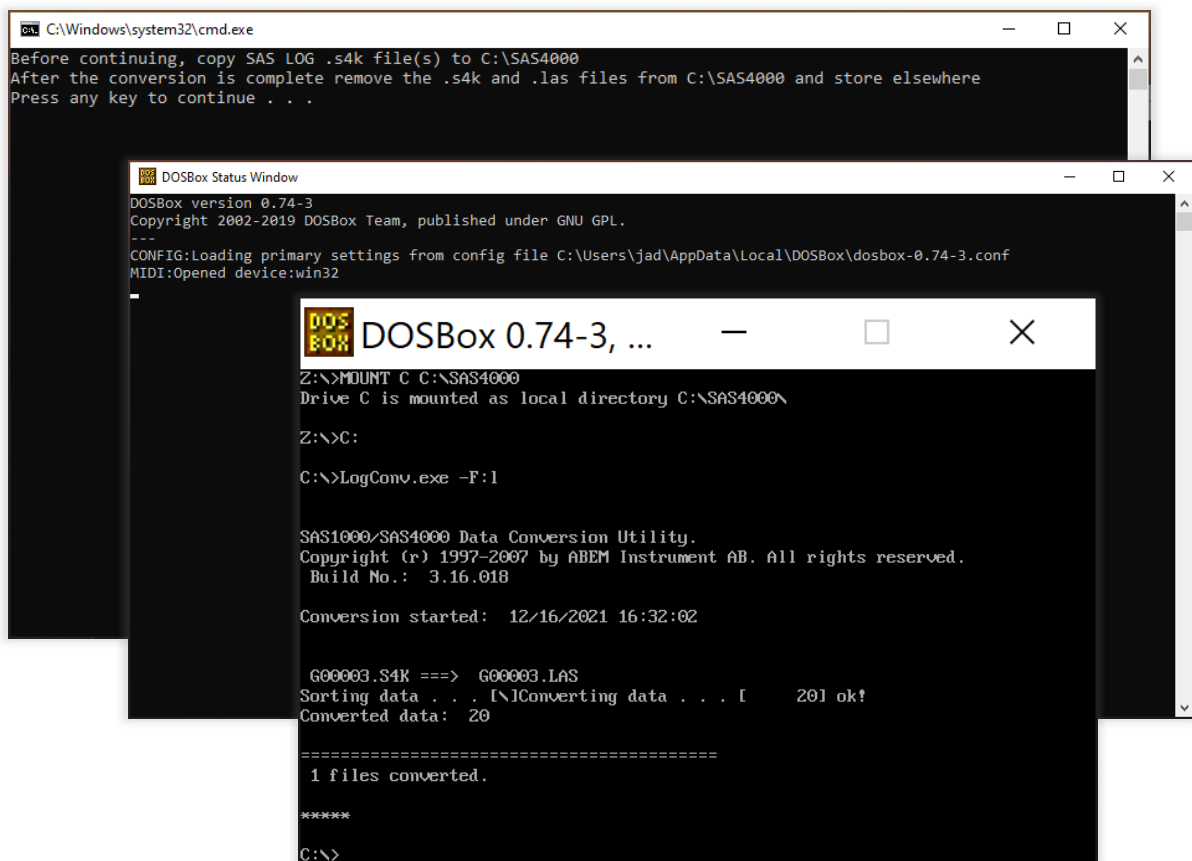
GUIDELINEGEO | ABEM | MALA

SAS Log Conversion Software: Installation procedure

- C. Double-click the **SAS Log Converter** icon on your desktop to begin conversion. It will remind you to add the files to the **SAS Utilities** folder before continuing and to remove them after the conversion completes.



- D. Press any key to continue and **DosBox** and the **converter** will initiate. A log of progress will display on screen. Once completed, all windows can be closed.



E. Once the conversion is completed, the **LAS files** will be available in the **SAS Utilities** root folder. Remove both the **.las** and **.s4k** files and return them to your project folders, leaving **C:\SAS4000** ready for the next time conversion of SAS Log files is required.

